

RAINSHAW STREET TEMPORARY CLOSURE

THE BOROUGH COUNCIL OF BOLTON
ROAD TRAFFIC REGULATION ACT 1984 S.14

The Council intends to make an order, operative from 27 July 2026 for 1 day approx. (9.30am - 2pm), the effect of which will be to prohibit all traffic from Rainshaw Street from Blackburn Rd to Back Primrose St to allow manhole repair works to take place. Alternate route will be via Ashworth Lane. The Order will end after 18 months or on completion of the works whichever first occurs.

Bolton Council. 6 July 2026.
[bolton.gov.uk/trafficorders](https://www.bolton.gov.uk/trafficorders)

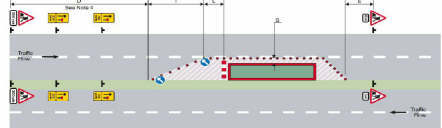


SAFETY ZONE DIMENSIONS
 Permanent speed limit 30mph or less
 Sideways safety zone 0.5m
 Longways safety zone 0.5m
 (Dimensions are minima)

Road Type	Single carriageway road (permanent speed limit of 30mph or less)	Single carriageway road (permanent speed limit of 50mph or more)	Dual carriageway road (permanent speed limit of 50mph or 60mph)	Dual carriageway road (optional speed limit)
Rate of taper (see Note 3)	1:10:13	1:10:20	1:10:25	1:10:25
Taper length (m) for hazard of standard 4.5m wide	50	80	100	100
Minimum number of cones	18	28	48	35
See Note 8 for spacing of cones in 45° tapers	3	3	1.5	3
Maximum cone spacing (m)	9	9	9	9
Maximum warning light spacing (m)	450	450	750	450
Longitudinal	9	9	9	9

Speed limit	Signage requirements
30 mph	As shown below and on page 42, except that distance plates may be omitted
40 mph	As shown below and on page 42

Dual carriageway with a speed limit of 40 mph, works on right lane



- Notes:
- For numbers and minimum size of cones, and dimensions D, T, L, S and E, see table inside back cover.
 - An information board (omitted here for clarity) must be displayed.
 - If access by works vehicle is required refer to Chapter 4 of the Traffic Signs Manual for signing of access and exit.
 - Dimension D is 275 mm (200 mm) in this example.

DETAIL B

Single/Dual carriageway 40mph or less - 450mm traffic cones, spacing 1.5m.
 Single/Dual carriageway 50mph or more - 750mm traffic cones, spacing 1.5m.
 Dual carriageway national speed limit - 750mm traffic cones, spacing 1.5m, relaxation 3m.

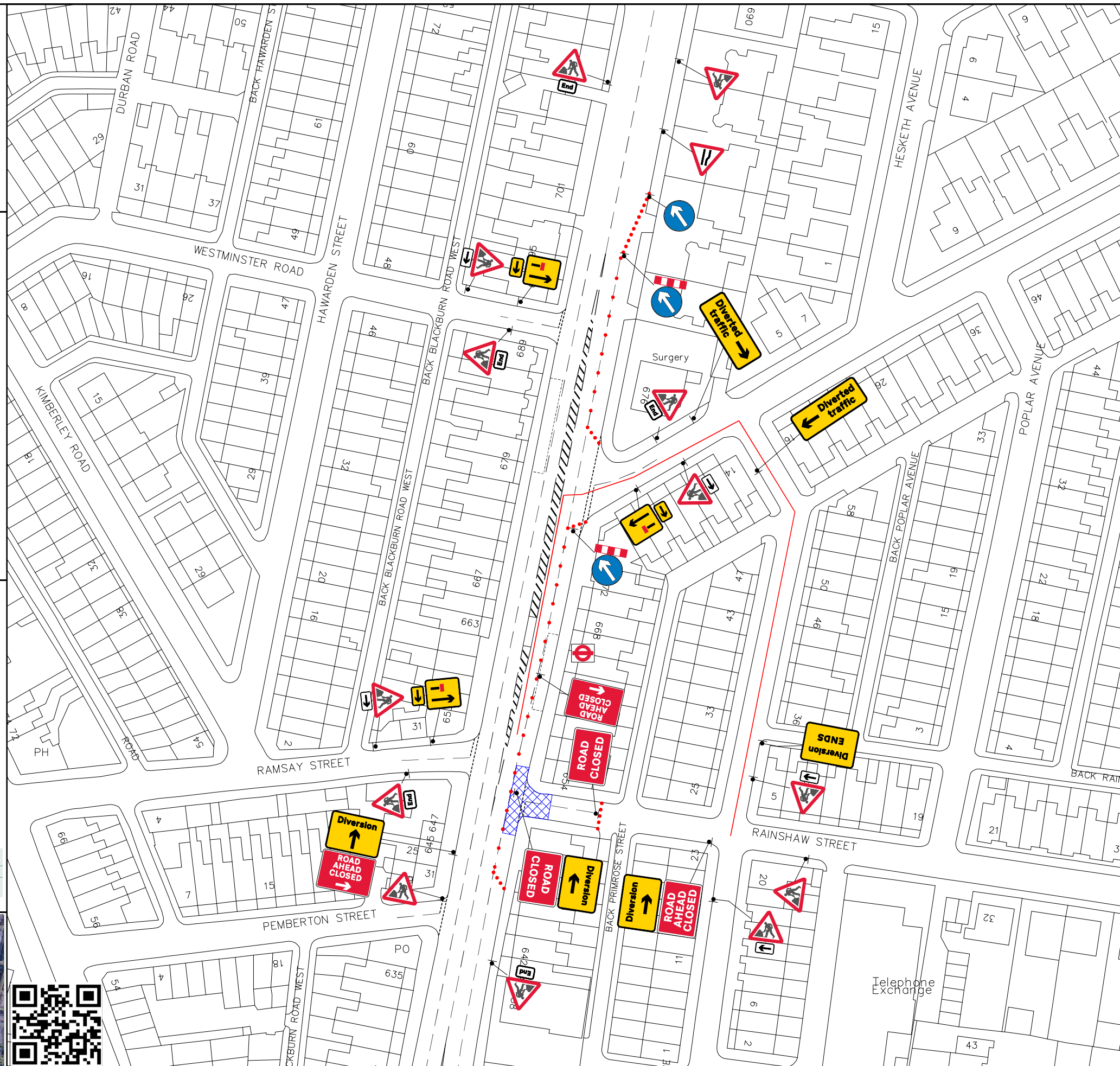
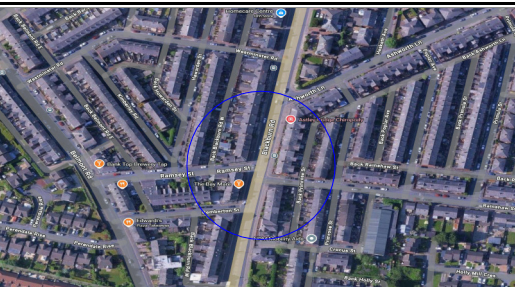
- Notes:
- During darkness, warning lights to BS EN 12352:2006 should be provided in accordance with Table A1.3 (Appendix 1).
 - 45° tapers have 1.5m spacing, no relaxations.
 - On motorways and NSL AP duals with hard shoulders, 1m cones will be required for both standard and relaxation works for lead tapers and the facing wall of lane changes.

DETAIL D

Single/Dual carriageway 40mph or less - 450mm traffic cones.
 Single/Dual carriageway 50mph or more - 750mm traffic cones.

- Notes:
- During darkness, warning lights to BS EN 12352:2006 should be provided in accordance with Table A1.3 (Appendix 1).
 - Detail D applies only to relaxation cases.

	Standard: Normal traffic including buses and HGVs	Restricted: Cars and light vehicles only
Two-way working	6.75 m minimum	5.5 m minimum
Shuttle working	3.25-3.50 m desirable width range 3.0 m absolute minimum	3.25 m desirable minimum width 2.5 m absolute minimum



Qty 1 Ref: 13-B-VAL Direction to hazard Left	
Qty 2 Ref: 13-B-VAR Direction to hazard Right	
Qty 1 Ref: 13-9 Schedule 13-9: Temporary Information	
Qty 1 Ref: 13-9 Schedule 13-9: Temporary Information	
Qty 1 Ref: 2702 Start of temporary diversion route	
Qty 1 Ref: 2702 End of temporary diversion route	
Qty 1 Ref: 2702 Start of temporary diversion route	
Qty 1 Ref: 2702 End of temporary diversion route	
Qty 1 Ref: 2703 Direction of temporary diversion route from junction ahead	
Qty 1 Ref: 2703 Direction of temporary diversion route from junction ahead	
Qty 1 Ref: 517 Road narrows on one side only ahead - left	
Qty 3 Ref: 573 Direction to hazard right	
Qty 2 Ref: 573 Direction to hazard left	
Qty 3 Ref: 610 Keep right	
Qty 5 Ref: 645 End panel	
Qty 13 Ref: 7001 Road works ahead	
Qty 2 Ref: 7010-FP-13.9 Nature of temporary hazard ahead - Road Closed	
Qty 1 Ref: 7010-FP-13.9 Nature of temporary hazard ahead - Road Ahead Closed	
Qty 2 Ref: 7105 Lane closure banner	
Qty 3 Ref: 7202.1 Temporary lane availability	

BUS STOP TO BE SUSPENDED AND RELOCATED FOR THE DURATION OF THE WORKS

KEY

	Traffic sign
	Traffic cone
	Traffic signals to Diagram 3000.1
	Working Space
	Pedestrian Barrier



TEMPORARY TRAFFIC MANAGEMENT PLAN

Issue	1
Date	20.05.2026
Drawn by	CT011

LANE 1 CLOSURE + ROAD CLOSURE + DIVERSION
BLACKBURN ROAD / RAINSHAW STREET
BOLTON, BL1 7AA

Drawing No - SUS16951

SAPPHIRE

Original drawing size A3 - NTS