

**THE BOROUGH COUNCIL OF BOLTON
ADOPTION OF ROADS INTO THE PUBLIC HIGHWAY
HIGHWAYS ACT 1980 - SECTION 38**

DECLARATION

I, Dwayne Lowe, Assistant Director of Highways & Planning, pursuant to the powers delegated to me for and on behalf of the Borough Council of Bolton, hereby declare the street(s) named below, having been made up to the appropriate standard, to be highway(s) maintainable at the public expense and to be recorded as such in the register of adopted streets, as of 22 June 2026.

This adoption is pursuant to Section 38 of the Highways Act 1980.

SCHEDULE

<i>Name of Street & USRN</i>	<i>Description</i>	<i>Approximate Length</i>
WOODLAND GARDENS, BOLTON USRN: 3406756	From its junction with Woodland Close, for an approximate distance of 79 metres in a north-easterly direction. An area as shown on drawing number 311148-ADP	79 metres

SIGNED:



DATE:

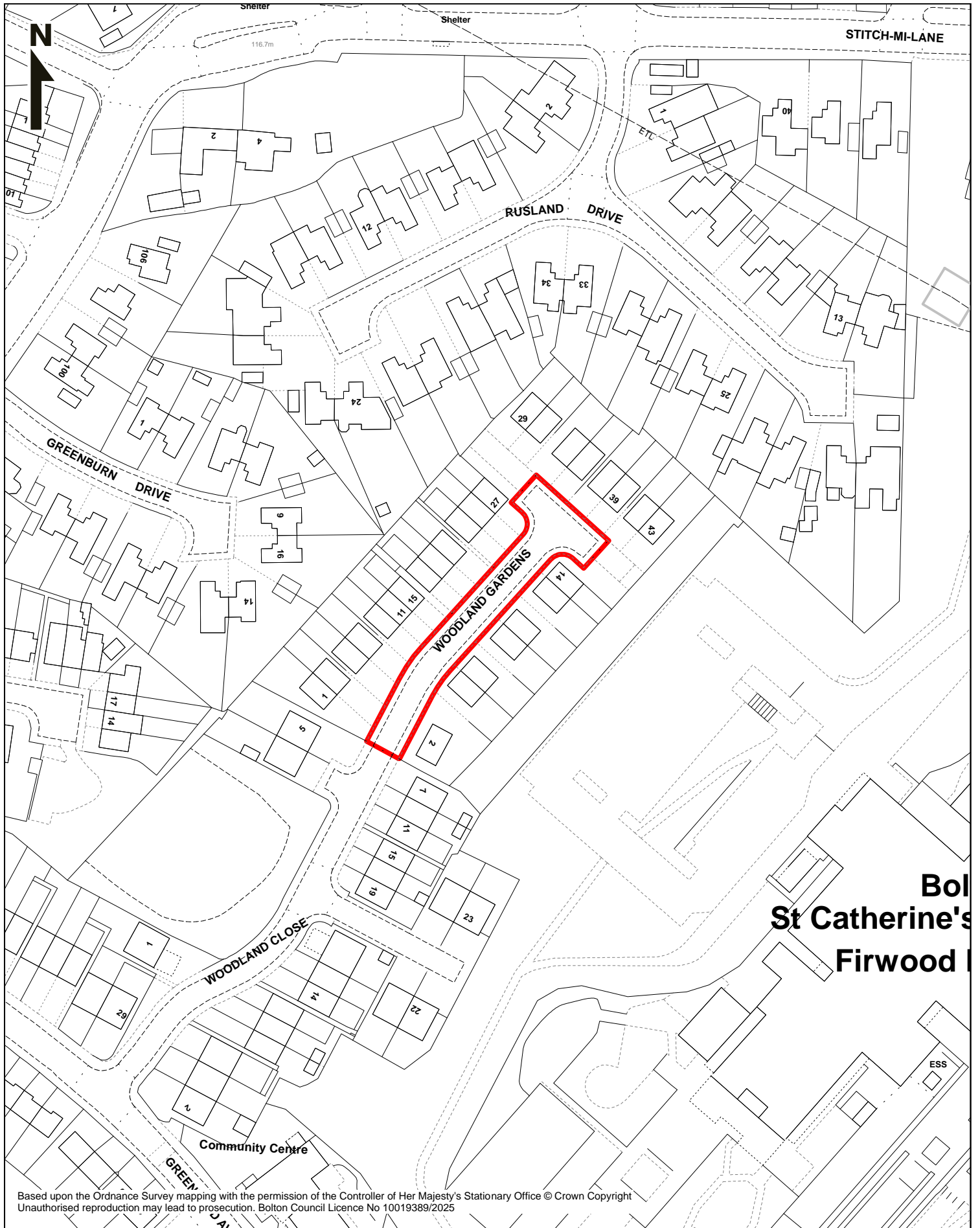
23 June 2026

.....
Dwayne Lowe CEng FCIHT FIHE
Deputy Director of Place

Highways & Engineering Division
Paderborn House
Civic Centre
Bolton BL1 1UA

**Bolton
Council**

26/311148/ADO/PDH



Based upon the Ordnance Survey mapping with the permission of the Controller of Her Majesty's Stationary Office © Crown Copyright
 Unauthorised reproduction may lead to prosecution. Bolton Council Licence No 10019389/2025

Bolton
St Catherine's
Firwood



Highways & Engineering
 Bolton Council
 Paderborn House
 Civic Centre
 Bolton BL1 1UA

Jon Dyson
 Director of Place

**ADOPTION OF ROADS INTO THE PUBLIC HIGHWAY
 HIGHWAYS ACT 1980 - SECTION 38**

HIGHWAY TO BE ADOPTED



Woodland Gardens, Bolton
USRN: 3406756

Scale **1:1250 at A4**

Drawn By **PDHouse**

Date **22 JUN 2026**

Dwg No. **311148-ADP**