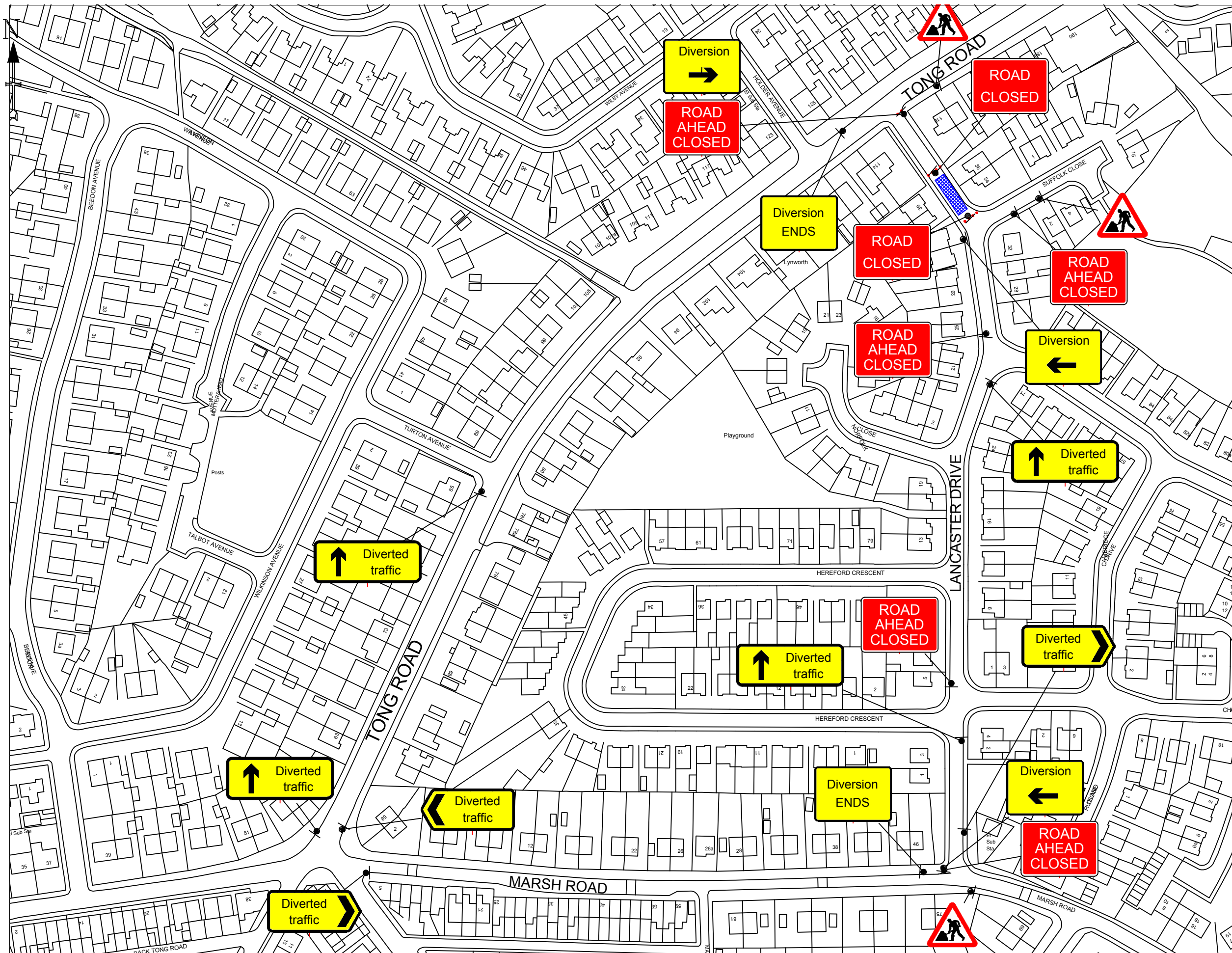


LANCASTER DRIVE, LITTLE LEVER TEMPORARY CLOSURE

THE BOROUGH COUNCIL OF BOLTON
ROAD TRAFFIC REGULATION ACT 1984 S.14

The Council intends to make an order, operative from 11 May 2026 for 1 week approx, the effect of which will be to prohibit all traffic from proceeding on Lancaster Drive from Tong Rd to Suffolk Close to allow electricity works to take place. Alternate route will be via Marsh Rd. The Order will end after 18 months or on completion of the works whichever first occurs.

Bolton Council. 20 April 2026.
[bolton.gov.uk/trafficorders](https://www.bolton.gov.uk/trafficorders)



DETAIL B (B)

Single/Dual carriageway 40mph or less - 450mm traffic cones, spacing 1.5m.
 Single/Dual carriageway 50mph or more - 750mm traffic cones, spacing 1.5m.
 Dual carriageway national speed limit - 750mm traffic cones, spacing 1.5m, relaxation 3m.

- Notes:
- 1) During darkness, warning lights to BS EN 12352:2006 should be provided in accordance with Table A1.3 (Appendix 1).
 - 2) 45" tapers have 1.5m spacing, no relaxations.
 - 3) On motorways and NSL AP duals with hard shoulders, 1m cones will be required for both standard and relaxation works for lead tapers and the facing wall of lane changes.

DETAIL D (D)

Single/Dual carriageway 40mph or less - 450mm traffic cones.
 Single/Dual carriageway 50mph or more - 750mm traffic cones.

- Notes:
- 1) During darkness, warning lights to BS EN 12352:2006 should be provided in accordance with Table A1.3 (Appendix 1).
 - 2) Detail D applies only to relaxation cases.

	Standard: Normal traffic including buses and HGVs	Restricted: Cars and light vehicles only
Two-way working	6.75 m minimum	5.5 m minimum
Shuttle working	3.25-3.50 m desirable width range 3.0 m absolute minimum	3.25 m desirable minimum width 2.5 m absolute minimum

Specials -



Notes -

DIVERSION ROUTE - TONG RD, MARSH RD

KEY

- Traffic sign
- Traffic cone
- Traffic signals to Diagram 3000.1
- Working Space
- Pedestrian Barrier

TEMPORARY
 TRAFFIC MANAGEMENT
 20 MPH

Issue	Date
1	03.02.26
Drawn By	MM

ROAD CLOSURE
 34 LANCASTER DRIVE BL3 1XF

Original drawing size A3 - NTS

Drawing Ref:
 5500297952