

ROAD TRAFFIC REGULATION ACT 1984 SECTION 14(1)

**THE BOLTON (PUBLIC FOOTPATH LITTLE LEVER 040)
(TEMPORARY CLOSURE) (NO.107) ORDER 2026**

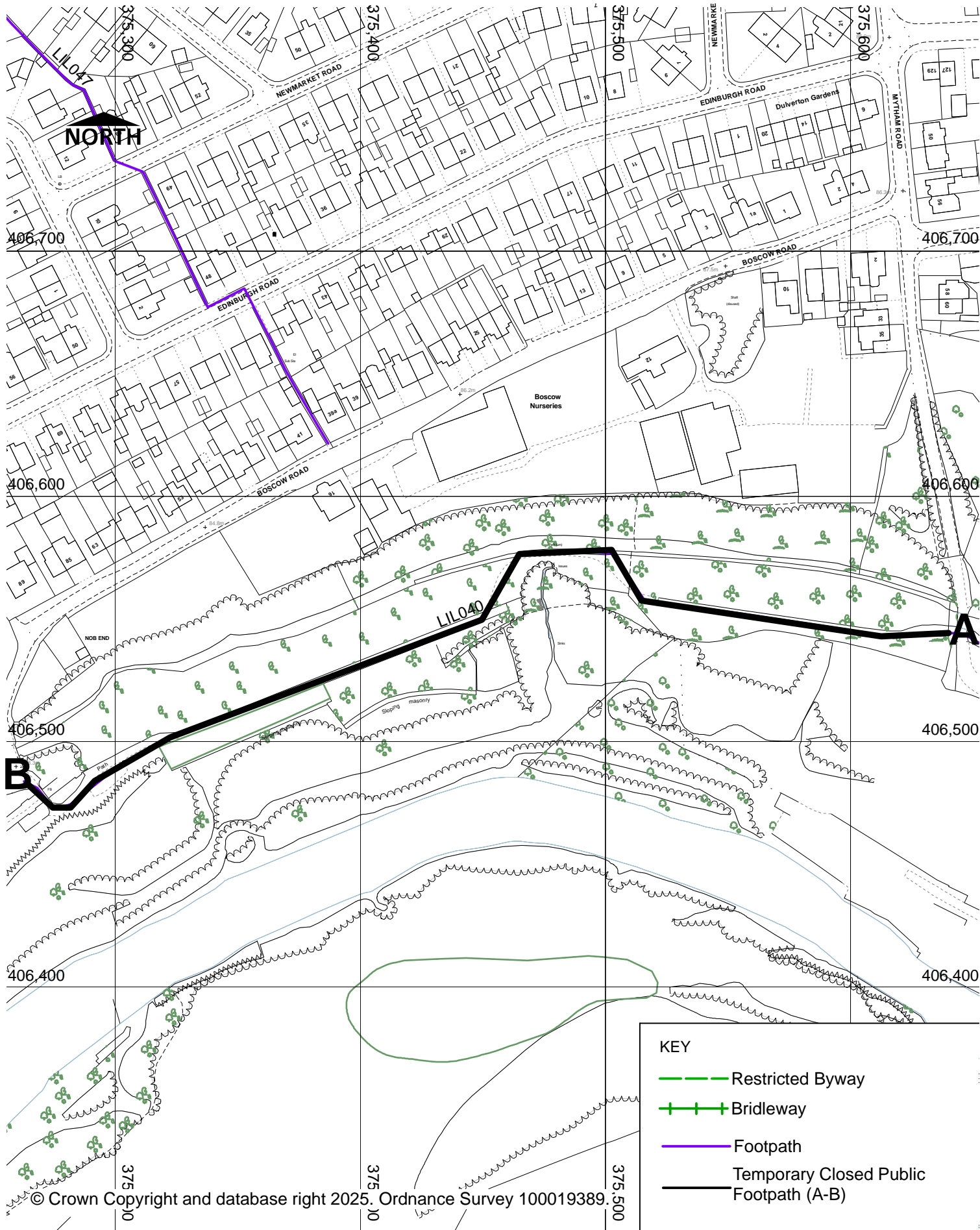
The Borough Council of Bolton has made an Order, which will be operative from **8th January 2026** and will prohibit all pedestrian traffic from using Public Footpath Little Lever 040 commencing from point A off Mytham Road at grid reference SD 75647 06543 in a generally west by north then west-southwest direction to point B Boscow Road at grid reference SD 75262 06483; as shown by the bold black line on the notice plan 1 LiL 040 over a total distance of approximately 434 metres.

An alternative route will be available commencing from Mytham Road point A at grid reference SD 75647 06543 then Boscow Road to point B at grid reference SD 75262 06483.

The Order is necessary to facilitate works to repair unsafe ground following storm damage and will continue for a period of 6 months or until the works are completed whichever is the earlier.

Dated: 7th January 2026

J Dyson, Director of Place, Town Hall, Bolton, BL1 1RU
LS/RST/099561



KEY

- Restricted Byway
- Bridleway
- Footpath
- Temporary Closed Public Footpath (A-B)



HIGHWAY AND ENGINEERING
DIVISION
PUBLIC RIGHTS OF WAY

THE BOROUGH COUNCIL OF BOLTON
Public Footpath Little Lever 040
Temporary Closure Order Section 14 RTA 1984

DIRECTORATE OF PLACE

Jon Dyson
Director of Place
Town Hall, Victoria Square, Bolton, BL1 1RU

Date

08/12/2025

Scale

1:2000

Drawn

AS

Drg. No.

1LiL040