

**PUBLIC PATH DIVERSION AND DEFINITIVE MAP AND STATEMENT MODIFICATION ORDER
TOWN AND COUNTRY PLANNING ACT 1990
WILDLIFE AND COUNTRYSIDE ACT 1981**

**THE BOROUGH COUNCIL OF BOLTON (PUBLIC FOOTPATH NO. 014 TURTON BROMLEY
CROSS) PUBLIC PATH DIVERSION ORDER AND DEFINITIVE MAP AND STATEMENT
MODIFICATION ORDER 2025**

The above Order, made on 30th July 2025 under Section 257 of the Town and Country Planning Act 1990 ("the 1990 Act") and under section 53A(2) of the Wildlife and Countryside Act 1981 will modify the Definitive Map and Statement for the area by diverting Public Footpath no. 014 Turton Bromley Cross as follows:

Public Footpath No. Turton Bromley Cross 014 which leads over land off Darwen Road, Bromley Cross, Bolton BL7 commencing from point A on Darwen Road at grid reference SD72737 12909 in a generally southerly direction to point B at grid reference SD72825 12757 for a distance of approximately 176 metres as shown by the continuous bold black line between points A-B on the Order Plan of a width of 1.5 metres throughout.

The new line will commence:

Public Footpath No. Turton Bromley Cross 014 which leads over land off Darwen Road, Bromley Cross, Bolton BL7 commencing from a new line from point C at grid reference SD72724 12909 leading in a generally easterly direction to point D at grid reference SD72752 12907 for a distance of approximately 28 metres then curving in a generally east by southernly direction to point E at grid reference SD72756 12907 for a distance of approximately 5 metres then curving in a generally south-south easterly direction to point F at grid reference SD72777 12849 for a distance of approximately 62 metres then running in a generally southerly direction to point G at grid reference SD72777 12796 for a distance of approximately 53 metres then running in a generally easterly direction to point H at grid reference SD72787 12796 for a distance of approximately 10 metres then running in a generally southerly direction to point I at grid reference SD72787 12714 for a distance of approximately 82 metres then running in a generally south easterly direction to point J at grid reference SD72824 12684 for a distance of approximately 48 metres as shown by the bold black dashes between points C-D-E-F-G-H-I-J on the Order Plan over a total distance of approximately 288 metres. The width between points C-D-E-F-G-H-I will be 2 metres throughout, between points I-J will be 3 metres throughout over a tarmac surface.

A copy of the Order and Plan have been placed and may be seen free of charge at The One Stop Shop, Town Hall, Bolton, BL1 1RU during open hours. Copies of the Order and Plan may be purchased.

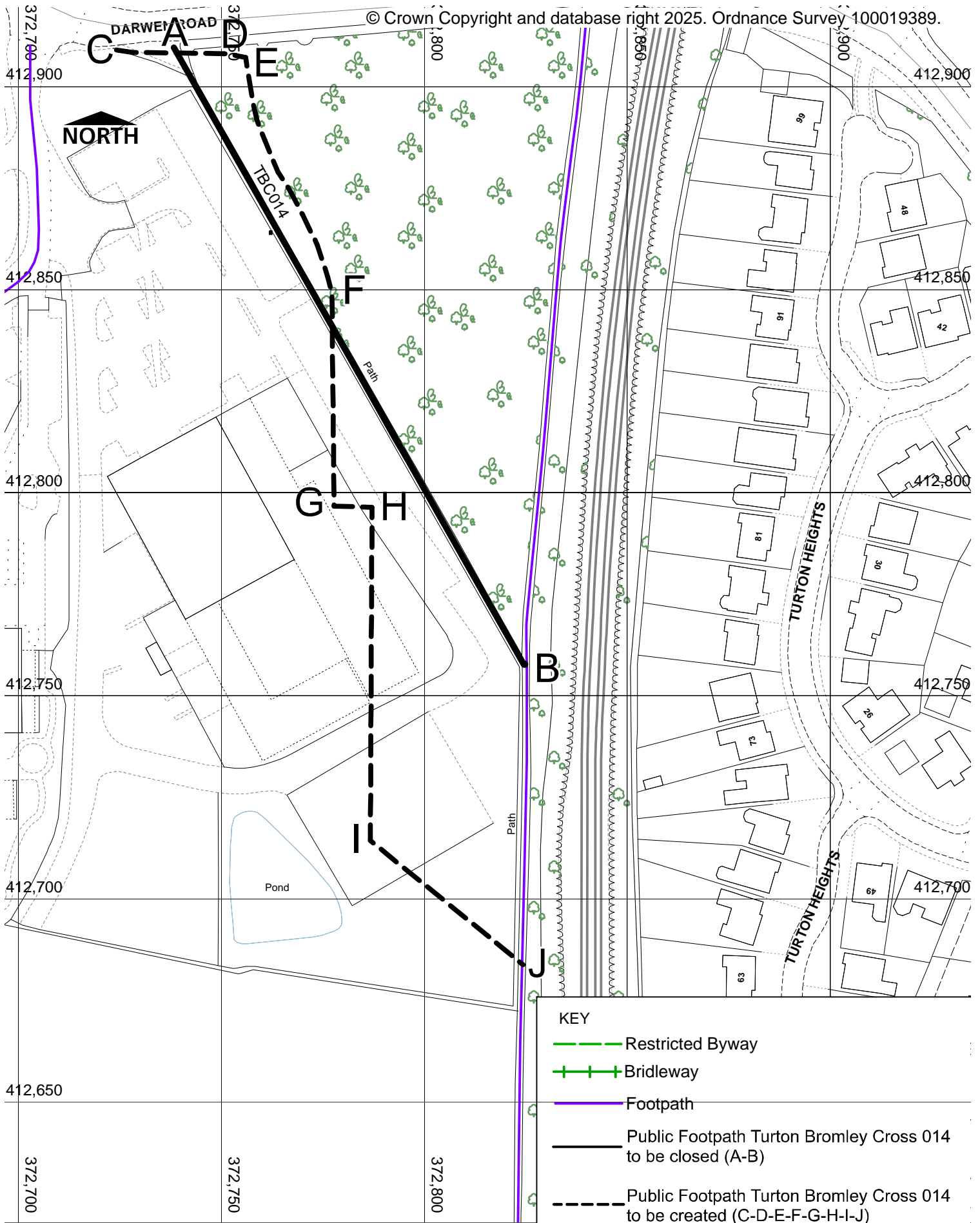
Objections or representations should state the grounds on which they are made and either sent to Ryan-Samuel.Thomas@bolton.gov.uk or in writing to Ryan Thomas at the address below no later than the 16th September 2025.

If no objections or representations are duly made, or if any so made are withdrawn, the Council may confirm the Order as an unopposed Order. If the Order is sent to the Secretary of State for confirmation, any objections or representations which have not been withdrawn will be sent with the Order.

Dated: 5th August

H Gorman Borough Solicitor
Chief Executives Department
Town Hall
Bolton BL1 1RU

LS/RST/097792



KEY

--- Restricted Byway

+ + + Bridleway

— Footpath

— Public Footpath Turton Bromley Cross 014 to be closed (A-B)

--- Public Footpath Turton Bromley Cross 014 to be created (C-D-E-F-G-H-I-J)



HIGHWAY AND ENGINEERING
DIVISION
PUBLIC RIGHTS OF WAY

THE BOROUGH COUNCIL OF BOLTON
Public Footpath Turton Bromley Cross 014 Diversion Order
Section 257 Town and Country Planning Act 1990

DIRECTORATE OF PLACE

Jon Dyson
Director of Place
Town Hall, Victoria Square, Bolton, BL1 1RU

Date

24/06/2025

Scale

1:1200

Drawn

AS

Drg. No.

1Tbc014 The Plan