

ROAD TRAFFIC REGULATION ACT 1984 SECTION 14 (1)

**THE BOLTON (PUBLIC FOOTPATH BOLTON 100)
(TEMPORARY CLOSURE) (NO.XX) ORDER 2025**

The Borough Council of Bolton intends to make an Order not less than seven days from the date of this Notice.

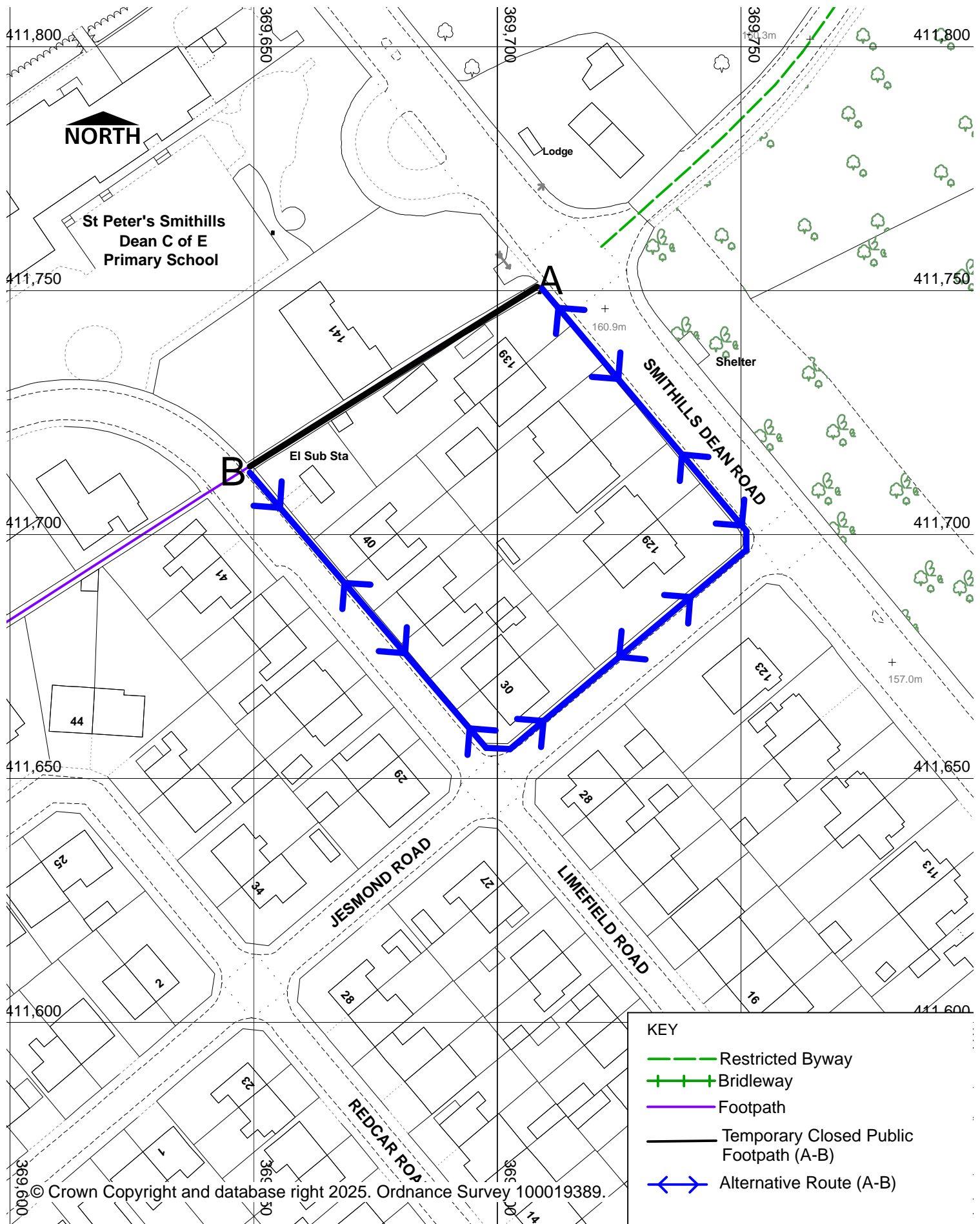
The effect which will be operative from 27th May 2025 and will prohibit all pedestrian traffic from using Public Footpath Bolton 100 commencing from Smithills Dean Road point A at grid reference SD 69709 11750 in a generally southwest by west direction to Limefield Road point B at grid reference SD 69649 11715; as shown by the bold black line on the Order plan 1Bol100 over a total distance of approximately 71 metres.

An alternative route will be available commencing from Smithills Dean Road point A at grid reference SD 69709 11750 then Jesmond Road, Limefield Road to point B at grid reference SD 69649 11715 as shown by the blue line with arrows on the Order plan 1Bol100

The Order is necessary to facilitate the installation of joint cable for new service connection and will continue for a period of 6 days or until the works are completed whichever is the earlier.

Dated: 7th May 2025

Jon Dyson, Director of Place, Town Hall, Bolton, BL1 1RU
LS/RST/097060



- KEY
- Restricted Byway
 - + + + Bridleway
 - Footpath
 - Temporary Closed Public Footpath (A-B)
 - ↔ Alternative Route (A-B)



HIGHWAY AND ENGINEERING
DIVISION
PUBLIC RIGHTS OF WAY

THE BOROUGH COUNCIL OF BOLTON
Public Footpaths Horwich 119 & Blackrod 013
Temporary Closure Order Section 14 RTA 1984

DIRECTORATE OF PLACE

Jon Dyson
Director of Place
Town Hall, Victoria Square, Bolton, BL1 1RU

Date

22/04/2025

Scale

1:1000

Drawn

AS

Drg. No.

1Bol100