

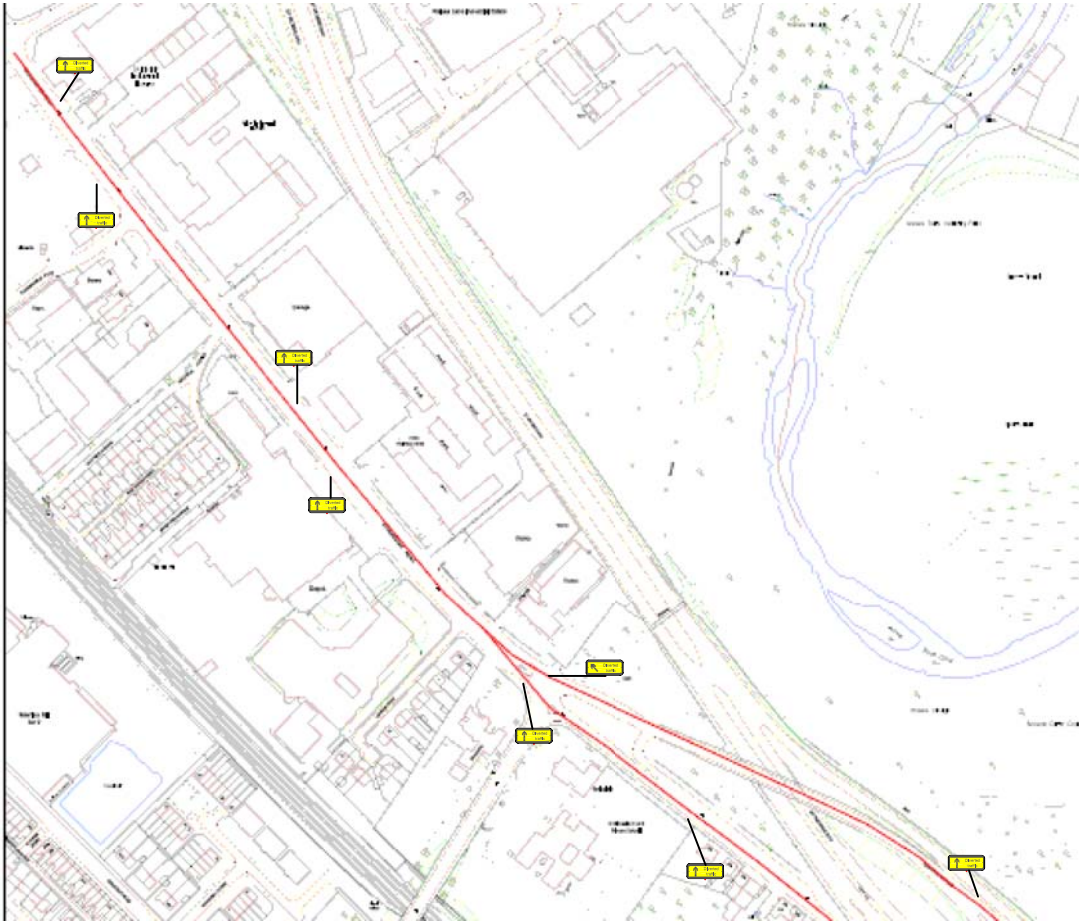
A666 ST PETERS WAY ROAD CLOSURES

THE BOROUGH COUNCIL OF BOLTON
ROAD TRAFFIC REGULATION ACT 1984 S.14

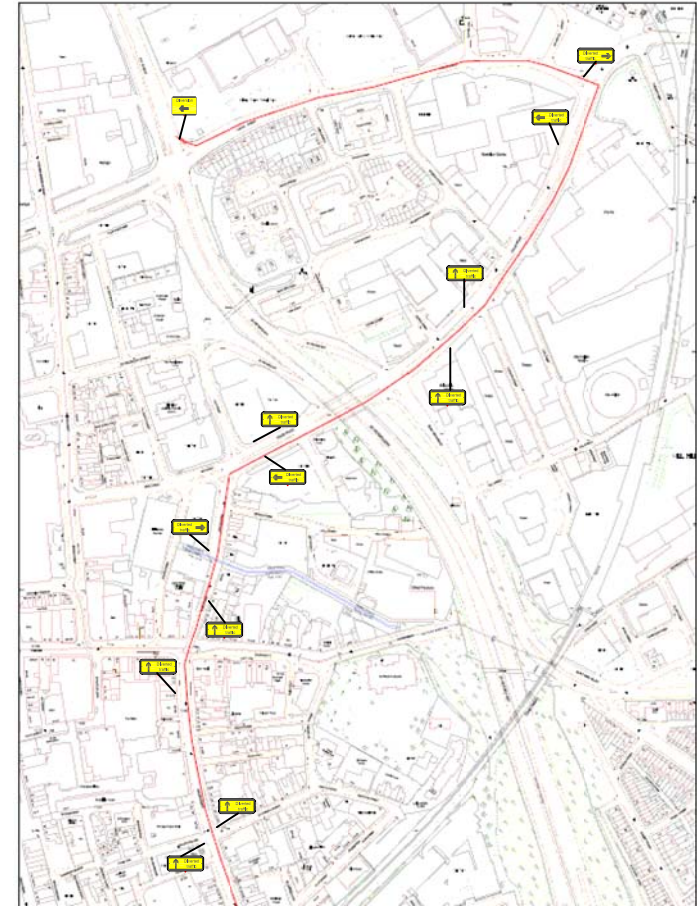
The Council intends to make an order, operative from 11 April 2026, the effect of which will be to prohibit all traffic from proceeding on St Peters Way (A666), both carriageways, between the M61 and Topp Way, including all entry and exit slip roads, to allow overnight routine maintenance works scheduled on the following dates (see on-site signs for confirmation):
11-12 APRIL, 30-31 MAY, 11-12 JULY, 05-06 SEPTEMBER, 17-18 OCTOBER.

Alternative route will be via Farnworth & Manchester Rd. The Order will end after 18 months or on completion of all works whichever first occurs.

Bolton Council. 23 March 2026.
[bolton.gov.uk/trafficorders](https://www.bolton.gov.uk/trafficorders)



002



001

St Peters Way , Bolton

KAYS Traffic Mngement Systems Limited

Drawn Shaun Hargreaves

Original
Drawing
Size

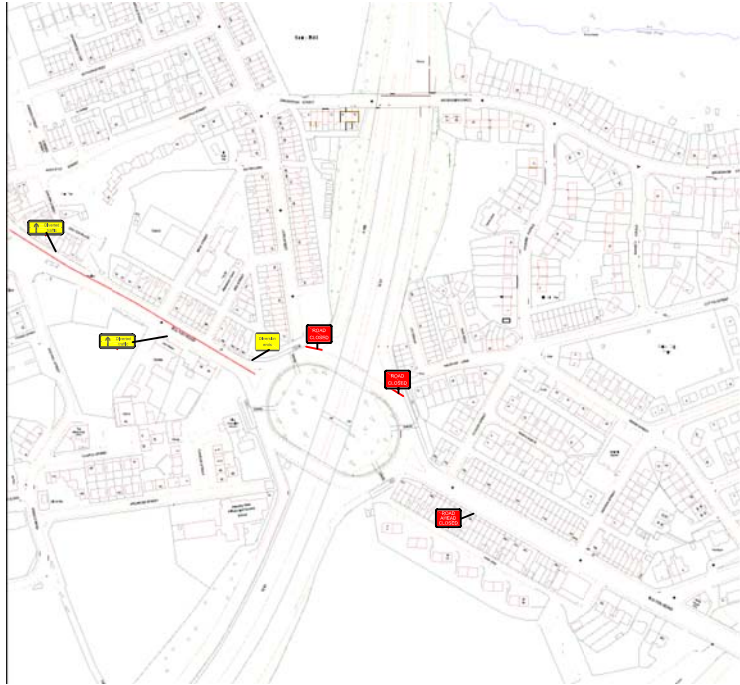
A3

Drg No.

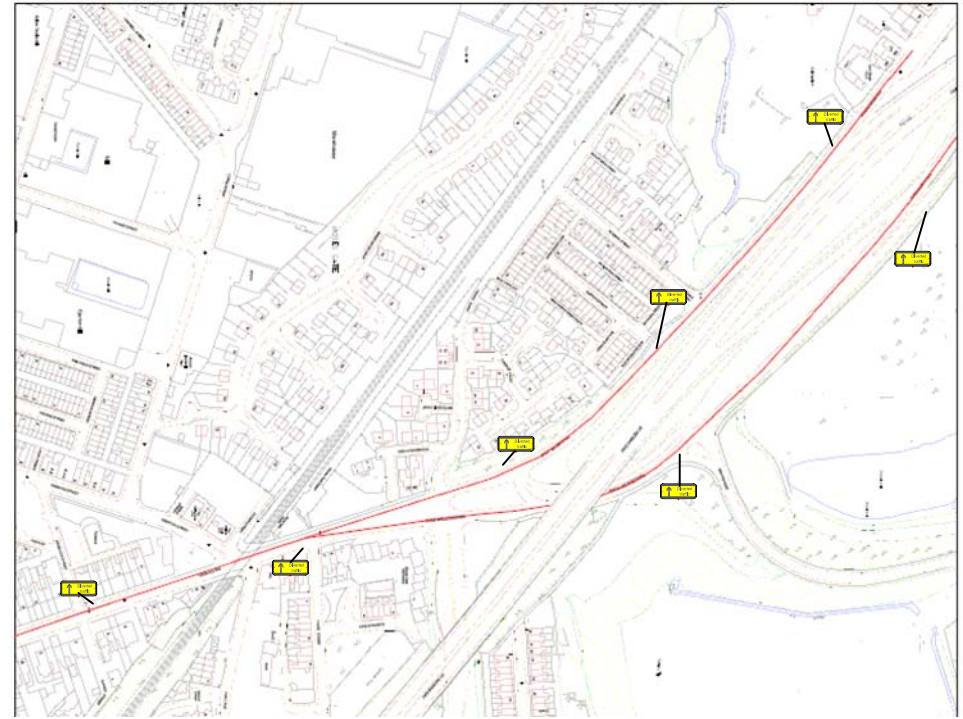
KTM240915SH

SCALE Not to scale

DIMENSIONS Metres



004



003

St Peters Way , Bolton

KAYS Traffic Mngement Systems Limited

Drawn Shaun Hargreaves

Original
Drawing
Size

A3

Drg No.

KTM240915SH

SCALE Not to scale

DIMENSIONS Metres