

## **Public Spaces Protection Order 2023 (Wildfires)**

### **Frequently Asked Questions:**

#### **What is a Public Space Protection Order (PSPO)?**

Public Space Protection Orders (PSPOs) are intended to deal with a particular nuisance or problem in an area that has a detrimental effect on the local community's quality of life by imposing restrictions on certain behaviours. The orders are designed so that we can all enjoy the use of public spaces safely.

A PSPO can last up to three years. The Council can – after further consultation – extend it for another three-year period. It would only do so if it is considered proportionate and necessary.

For further information about PSPOs in general, please see [Public Spaces Protection Orders \(PSPOs\) – Bolton Council](#)

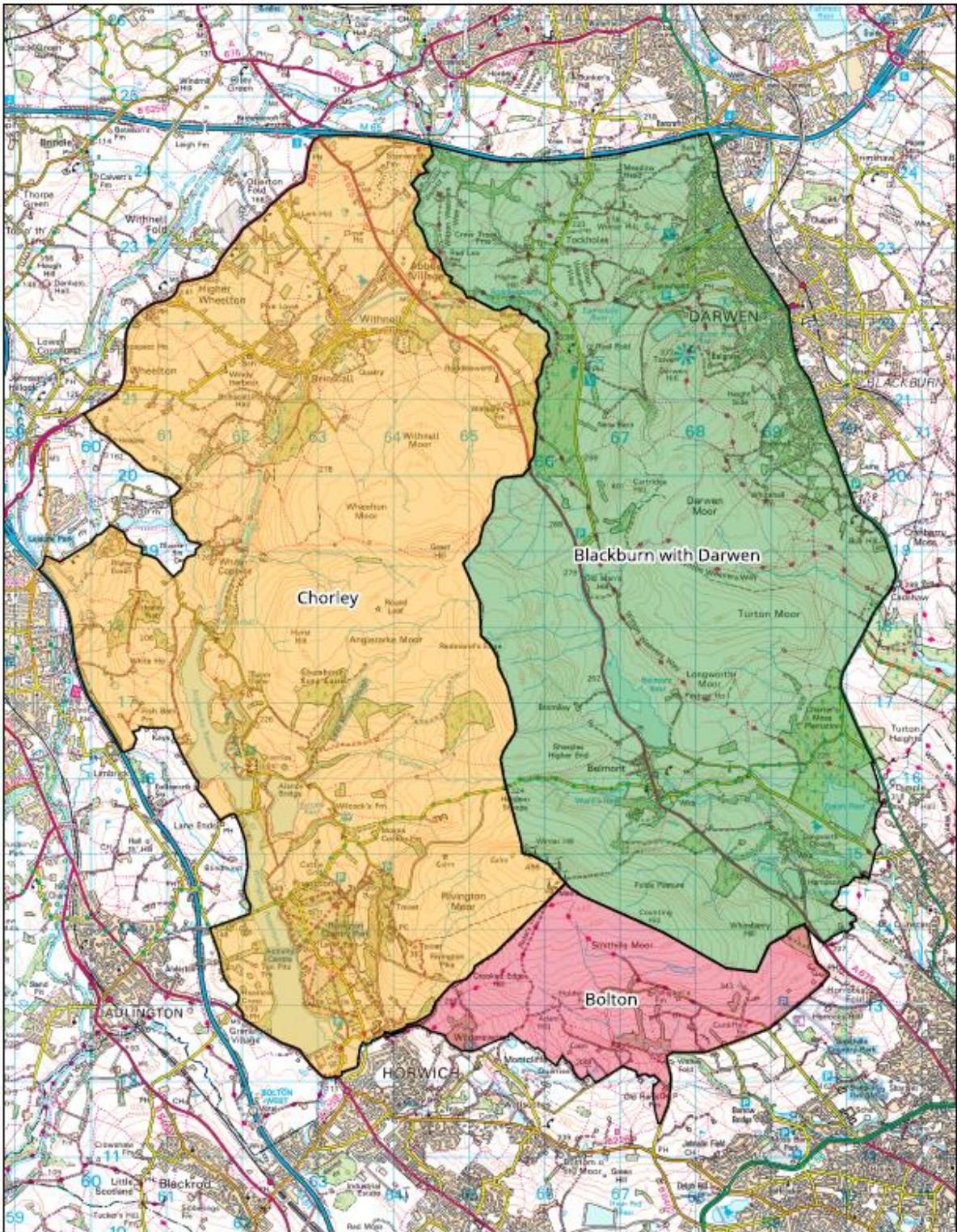
#### **What area is covered by the PSPO?**

##### **Working Together - Bolton, Chorley and Blackburn with Darwen:**

A wildfire can rapidly burn across acres of moorland destroying everything in its path. It is important that any restrictions put in place apply across the wider moorland area. Bolton, Chorley and Blackburn with Darwen Councils have therefore worked together to introduce a PSPO in each of their local authority areas which include the same restrictions.

The below map shows the land covered by the restrictions under a PSPO across the three local authority areas.

To find out more about the PSPO in place at Chorley and Blackburn with Darwen, please visit their respective websites.



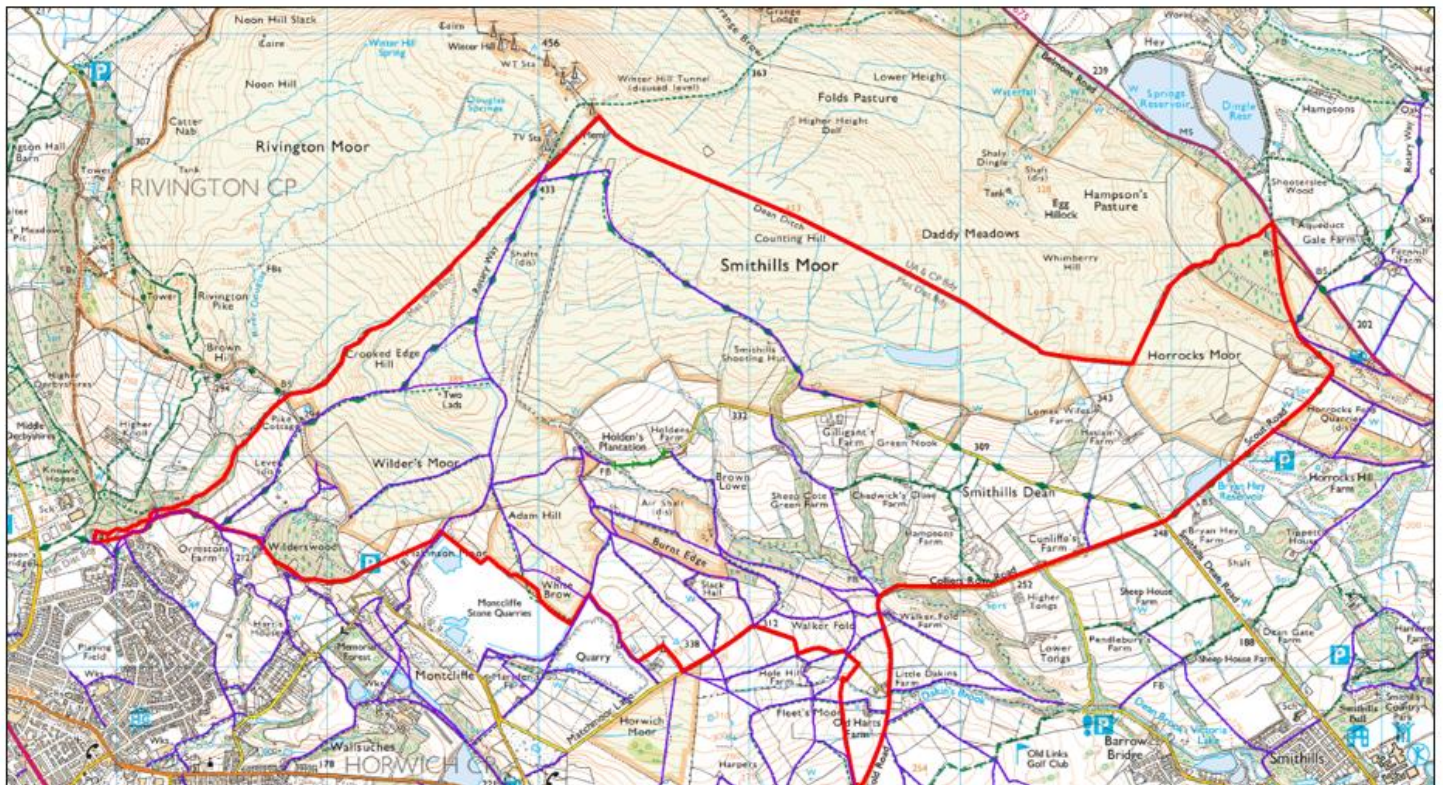
Approximate Scale = 1:63708  
(when printed at A4)

© Crown copyright and database right 2023 OS 100031396  
You are permitted to use this data solely to enable you to respond to, or interact with, the organisation that provided you with the data. You are not permitted to copy, retransmit, distribute or sell any of this data to third parties in any form.





## Boltons PSPO Restricted Area:



Title: Public Spaces Protection Order (PSPO) – Wildfires

For further information on Rights of Way and Access Land, please visit: [Rights of way and accessing land: Use your right to roam - GOV.UK \(www.gov.uk\)](#) or [www.bolton.gov.uk](#)

OS Crown Copyright 0100019389. CRoW Act 2000, Open Access Land

### Key

Bridleway (All Traffic)	
Bridleway	
Path	
Access Land (CROW)	
PSPO	

### What does the PSPO mean for people living in, or visiting, the area?

The proposed PSPO would prohibit (ban) certain activities within the boundaries of the PSPO which have been identified as carrying a significant risk of causing wildfires. This includes the lighting or tending of fires, barbecues, fireworks, sky lanterns or using any article/object which causes a naked flame.

### What is the penalty for breaching the PSPO?

- A £100 fine on the spot, known as a Fixed Penalty Notice (FPN) which must be paid within 14 days.
- A fine of up to £1,000 if the charge goes to court. Defendants may also face the prospect of added court costs, and if convicted, they will obtain a criminal record for the offence.

### Can anybody appeal the introduction of the PSPO?

Anyone who lives in, regularly works in, or visits the area can appeal a PSPO in the High Court within 6 weeks of it being made.

## **How will people who don't live in the area or visit frequently know about the PSPO and the restrictions in place?**

Signage will be located across the PSPO area which will indicate to visitors that the restrictions are in place and the behaviour that is prohibited. Given the size of the area and the nature of the land it is not possible to have signs everywhere and we ask that you visit our web page to check the maps if you are planning a trip to the area.

## **My property is within the PSPO area – what does this mean for me?**

The Public Space Protection Order would only apply to public spaces where the public or any section of the public has access to, whether this is by payment, by right or by express or implied permission. This therefore doesn't include a private garden for example. However, we would ask you to consider the impact of what you are doing within your property, behave appropriately and take precautionary action to prevent the risk of fire.

## **Does the PSPO stop me from managing my land?**

No. However, we would always ask that your actions are lawful and in consultation with the fire service, and that you have taken all of the necessary steps to be compliant. We also ask that you ensure you comply with any requirements put in place by the landowner as appropriate.

## **What do I do if I see somebody breaching the PSPO?**

If you feel their actions are likely to cause a fire, damage land and/ or put the community at risk **this is an emergency** so please ring 999.

If you simply want to report an issue or concern which doesn't require an emergency response, please contact the Council on 01204 336500 or email [asbreporting@bolton.gov.uk](mailto:asbreporting@bolton.gov.uk). Alternatively, you can contact the police on 101 (non-emergency number).

## **Who do I speak to, to find out more about the PSPO?**

If you have any further questions about the proposed PSPO, or would like to speak to someone about PSPOs more generally, please email [community.safety.services@bolton.gov.uk](mailto:community.safety.services@bolton.gov.uk)