

ROAD TRAFFIC REGULATION ACT 1984 SECTION 14(1)

**THE BOLTON (PUBLIC FOOTPATH NO. 048 TURTON BRADSHAW SOUTH)
(TEMPORARY CLOSURE) (NO.41) ORDER 2018**

The Borough Council of Bolton has made an Order, which will be operative on the 17th December 2018 which will prohibit all pedestrian traffic from using Public Footpath 048 Turton Bradshaw South commencing from Longsight Lane point A at grid reference SD 373935 411017 in a generally west north westerly direction to point B at the junction with public footpath Turton Bradshaw South 043 at grid reference SD 373668 411083 as shown by the bold, black line on the Order plan 1TBS048 over a total distance of approximately 292 metres.

An alternative route is available commencing from public footpath Turton Bradshaw South 048, point A at grid reference SD 373935 411017; public footpath Turton Bradshaw South 041 (Longsight Lane) then public footpath Turton Bradshaw South 043 to point B at grid reference SD 373668 411083 as shown by the blue line with arrowheads on the Order plan 1TBS048.

The Order is necessary on health and safety grounds due to a landslip for a period of 18 months, or until the works are completed within this period.

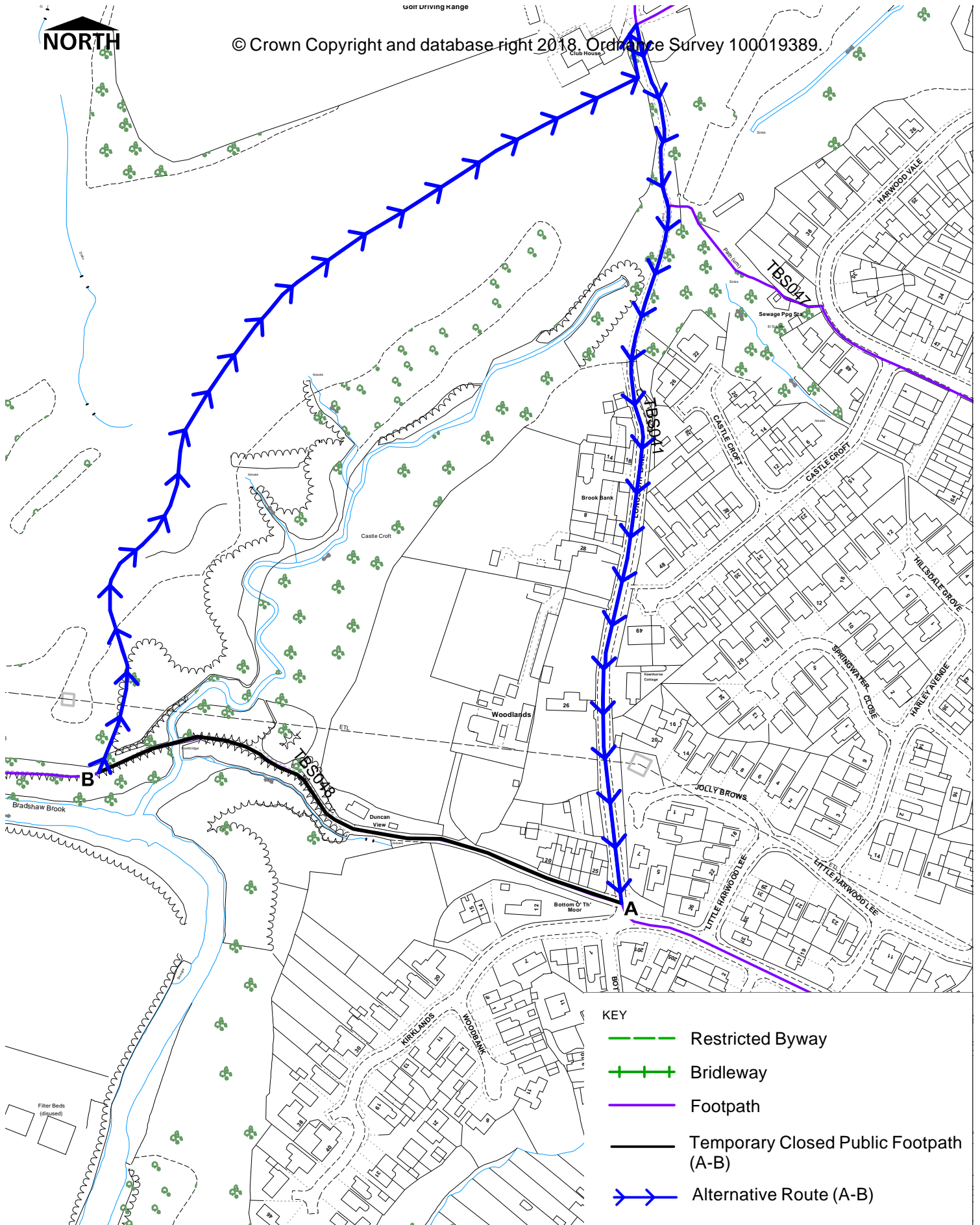
Dated: 17th December 2018

G Brough, Director of Place, Town Hall, Bolton, BL1 1RU



© Crown Copyright and database right 2018, Ordnance Survey 100019389.

500m Driving range



- KEY**
- Restricted Byway
 - + + + Bridleway
 - Footpath
 - Temporary Closed Public Footpath (A-B)
 - > > > Alternative Route (A-B)



HIGHWAY AND ENGINEERING DIVISION
PUBLIC RIGHTS OF WAY

THE BOROUGH COUNCIL OF BOLTON
Public Footpath Turton Bradshaw South 048
Temporary Closure Order Section 14 RTA 1984

DIRECTORATE OF PLACE

Gerald Brough BSc (Hons) MBA, Dip M
Director of Place
Town Hall, Victoria Square, Bolton, BL1 1RU

Date
28/11/2018

Scale
1:2500

Drawn
AS

Drg. No.
1TBS048