

Brilliant Results

Reading and spelling ages rise, on average, by 10 months after 26 hours.

Some of our schools have confirmed rises of 2 years or more after only 26 hours use.

One of the most notable improvements is with students' self-confidence, as their new skills are transferred to their classes and other areas of school life.

A brilliant programme all round. It's good that you can easily have 4/5 pupils working individually... Excellent results. Ofsted were impressed.

- Penwortham Girls, Preston

We would like to continue with IDL next year as we have found the programme has had a fantastic impact, not only academically but socially and emotionally.

- St. Andrew's C of E, Ashton

IDL and the framework for school inspection:

- Improves reading & spelling
- Increases SEN achievement
- Prepares for training & employment
- Shows progress relative to starting points
- Narrows group performance gaps

Lifting the barriers to Learning

Brilliant Results

Simple To Use

Independent Learning

Individually Tailored

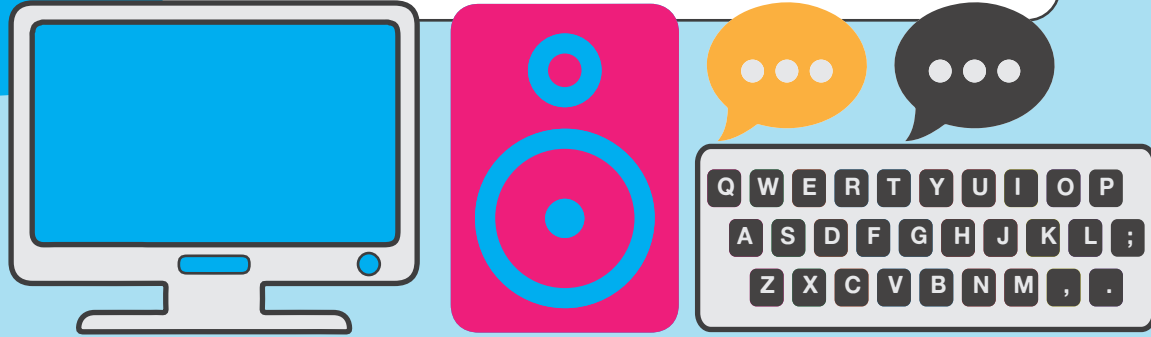
Multi Sensory

Literacy and Specialist Dyslexia Support
www.idlcloud.co.uk

Multi Sensory

iCCL uses sight, sound, touch, and voice to improve reading and spelling. Links are made between the visual, auditory and tactile pathways.

Students see and hear the words, type and repeat, then read aloud and listen back to their own voice.



Independent Learning

Students can work independently, allowing for larger intervention groups.

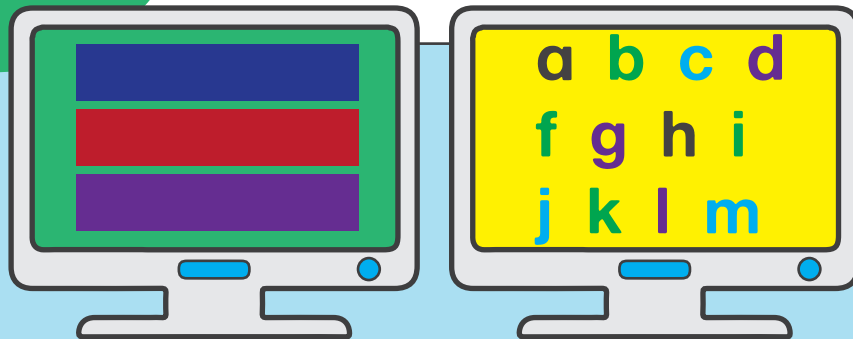
The cloud is used to store student progress so they can work from any location - picking up where they left off.



Individually Tailored

iCCL is automatically tailored to each individual. Students choose the colours they feel the most comfortable with.

Lines of text are in different colours, making tracking and finding your place easier.



Simple To Use

iCCL is very simple to use for both students and teachers.

Words are repeated, often with missing letters, to develop visual memory.

Teachers will find it easy to monitor progress.

