

PROPOSALS FOR

Bolton

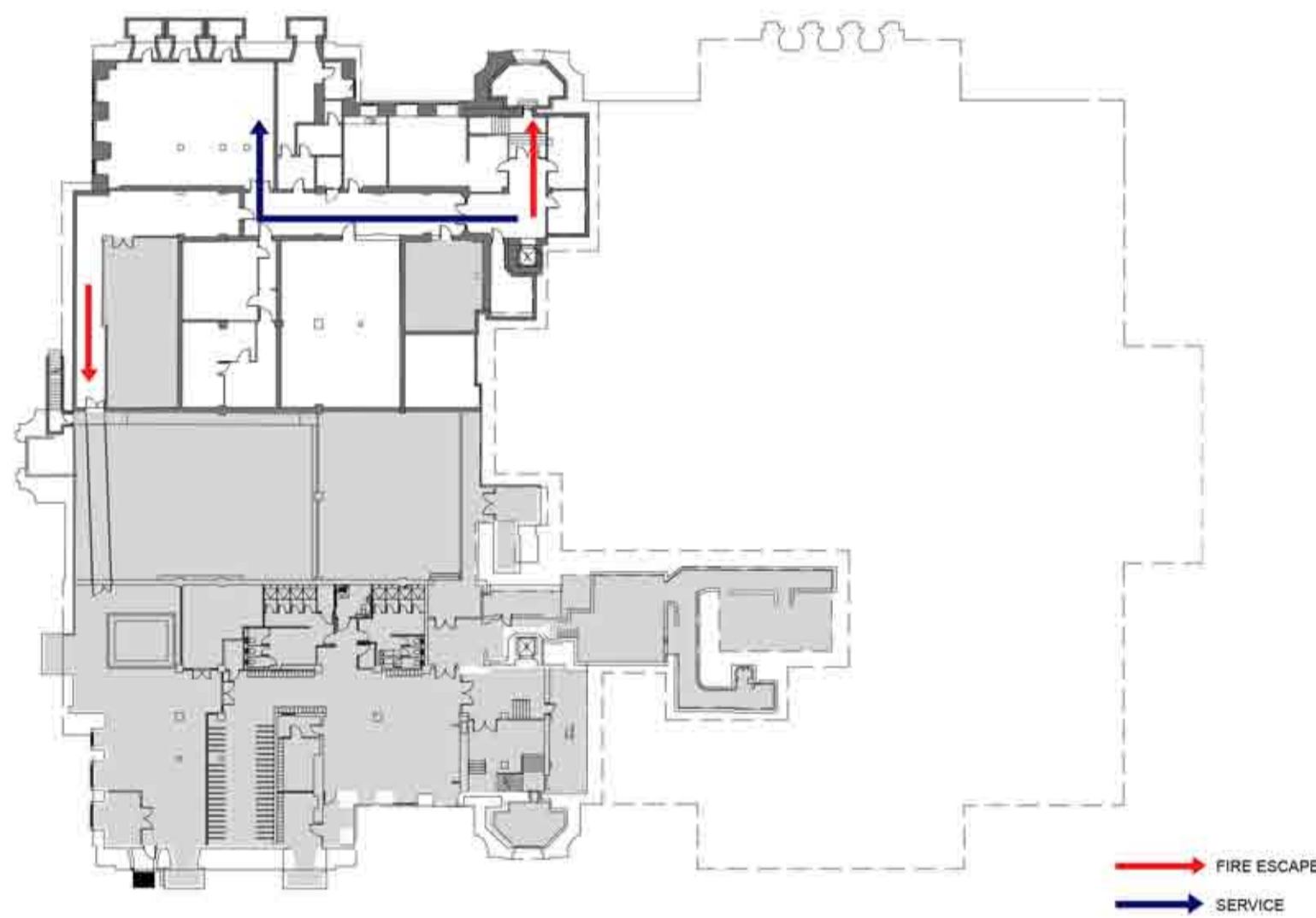
ALBERT HALL REFURBISHMENT

Basement

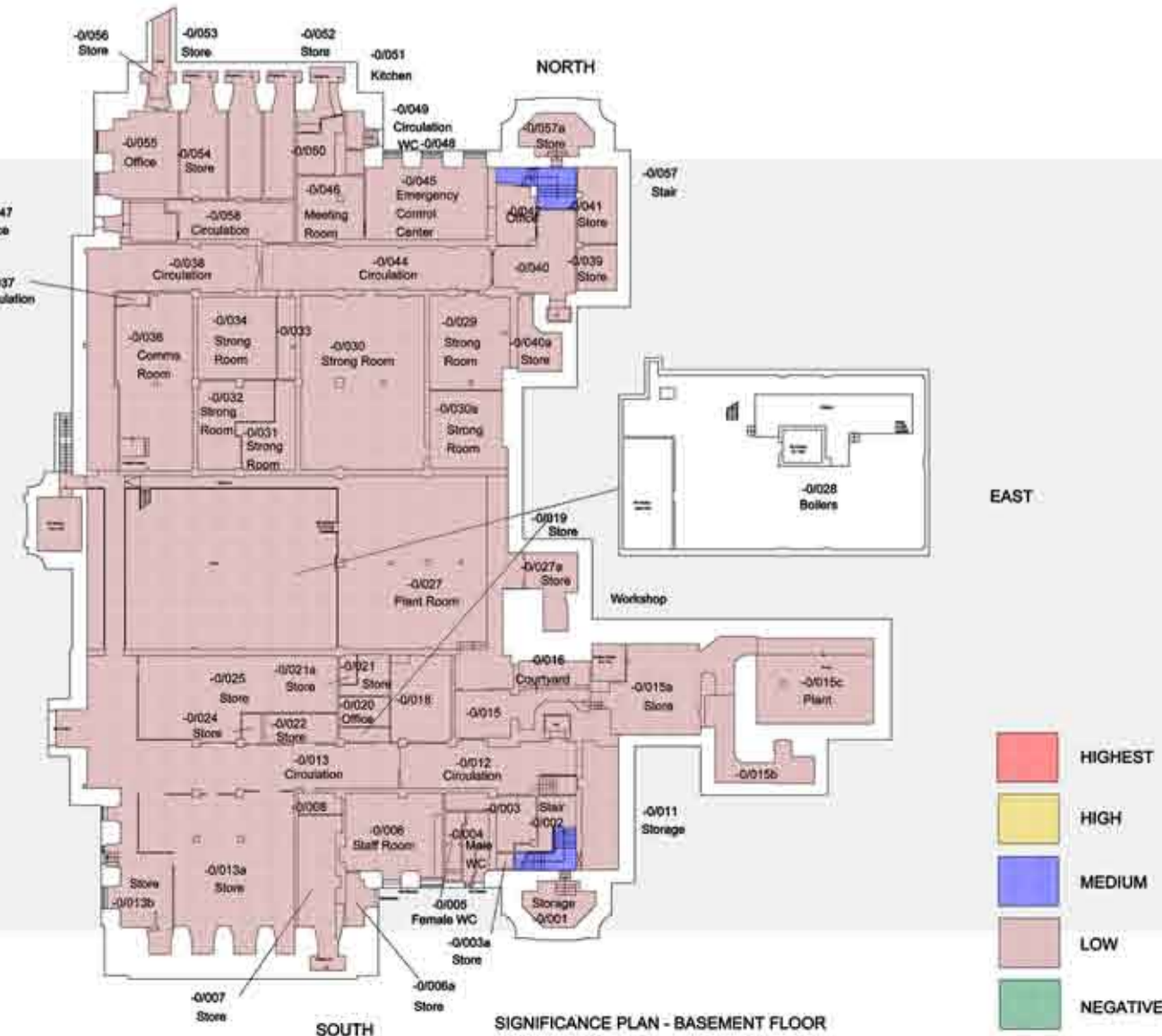
Drawing not to scale

Closed to the public the basement has a number of disused rooms. There are repairs and spatial improvements that need to be carried out making this floor the ideal location for the buildings support services and storage, clearing a lot of clutter from the ground floor.

Basement key routes



Basement Areas of Significance



Significance Explained



B10
Support services - 149sqm

Max occupants - 3
To be made open plan for a various support for the building



B9
Male, Female and Disabled WC - 54sqm

Replanning the space - new layout to create staff Male / Female and accessible WCs



B8
Kitchen - 18sqm

New kitchen / break out area for staff to be created
New finishes and fittings



B3
Support Services - 49sqm
Occupants - 1

Space to be redecorated and used for support services



B4-7
Strong Rooms - 247sqm
Carrying out minor decoration

B1 - 2
Storage - 24sqm
Space to be redecorated and used as storage

